



**K12
Architects**

K12 Architects, Inc
3090 Fite Circle, #104
Sacramento, CA 95827
PH:(916) 455-6500 FAX:(916) 455-8100

CONSULTANTS:

CONTRACTOR:

PROJECT:

**FIDDYMENT
PLAZA**

**NEW CONVENIENCE STORE
WITH FUELING,
SHELL RETAIL TENANT SPACE**

**4701 Fiddymment Road
Roseville, California 95747**

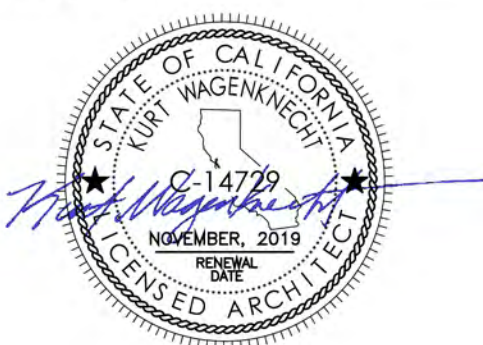
DEVELOPER:

**DHILLON AND SONS
ENTERPRISES**

**201 Bellingham ct
Lincoln, CA 95648**

REVISIONS:

PROFESSIONAL SEALS:



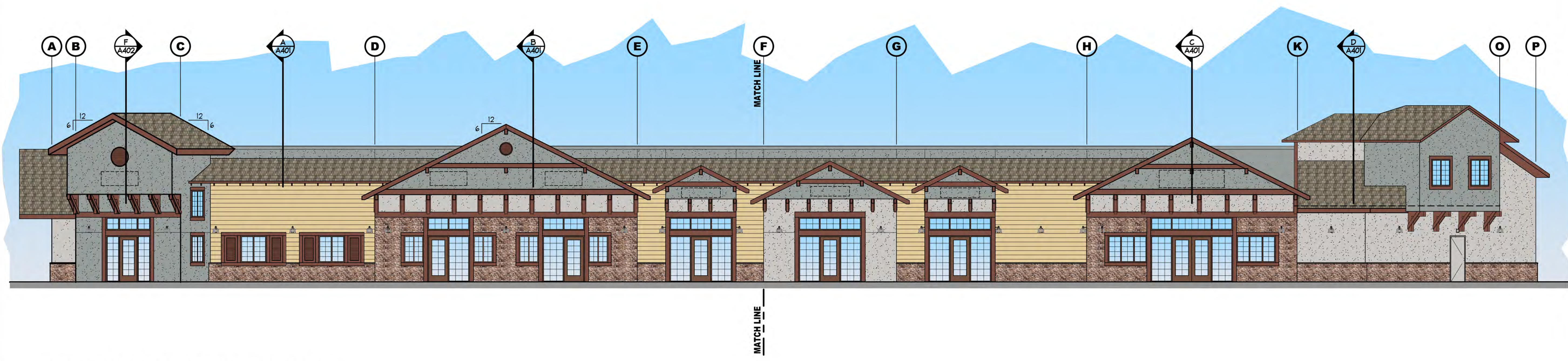
PROJECT NUMBER: **16-021** PROJECT DATE: **8-10-2018**

SHEET CONTENTS:

**OVERALL EXTERIOR
EAST & WEST
ELEVATIONS**

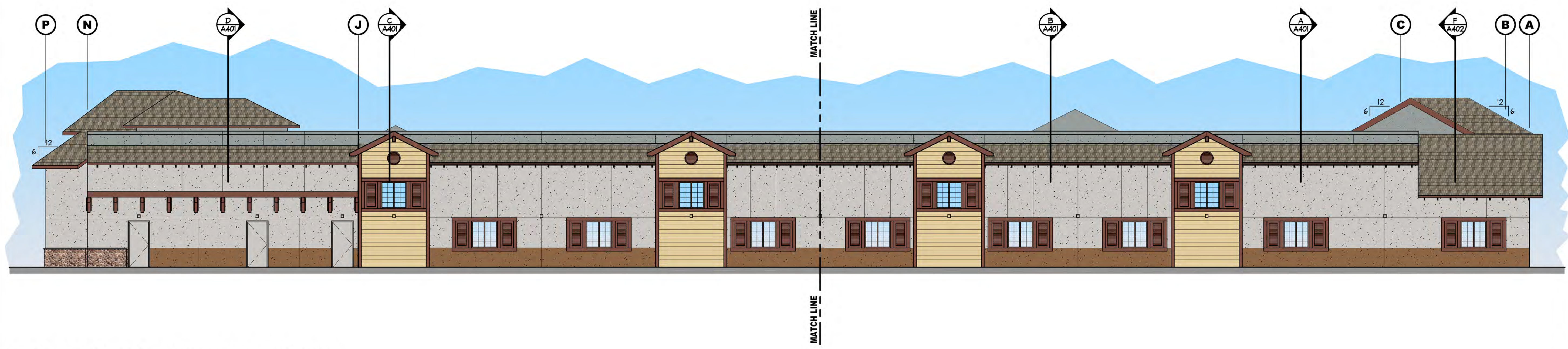
SHEET NUMBER:

A300



18 OVERALL WEST ELEVATION - SEE A301

SCALE: 1/8" = 1'-0"



20 OVERALL EAST ELEVATION - SEE A302

SCALE: 1/8" = 1'-0"



K12 Architects

K12 Architects, Inc
3090 Fite Circle, #104
Sacramento, CA 95827

PH:(916) 455-6500 FAX:(916) 455-8100

CONSULTANTS:

CONTRACTOR:

PROJECT:

**FIDDYMENT
PLAZA**

**NEW CONVENIENCE STORE
WITH FUELING,
SHELL RETAIL TENANT SPACE**

**4701 Fiddyment Road
Roseville, California 95747**

DEVELOPER:

**DHILLON AND SONS
ENTERPRISES**

**201 Bellingham ct
Lincoln, CA 95648**

REVISIONS:

PROFESSIONAL SEALS:



PROJECT NUMBER: **16-021** PROJECT DATE: **8-10-2018**

SHEET CONTENTS:

**EXTERIOR
ENLARGED WEST
ELEVATION**

SHEET NUMBER:

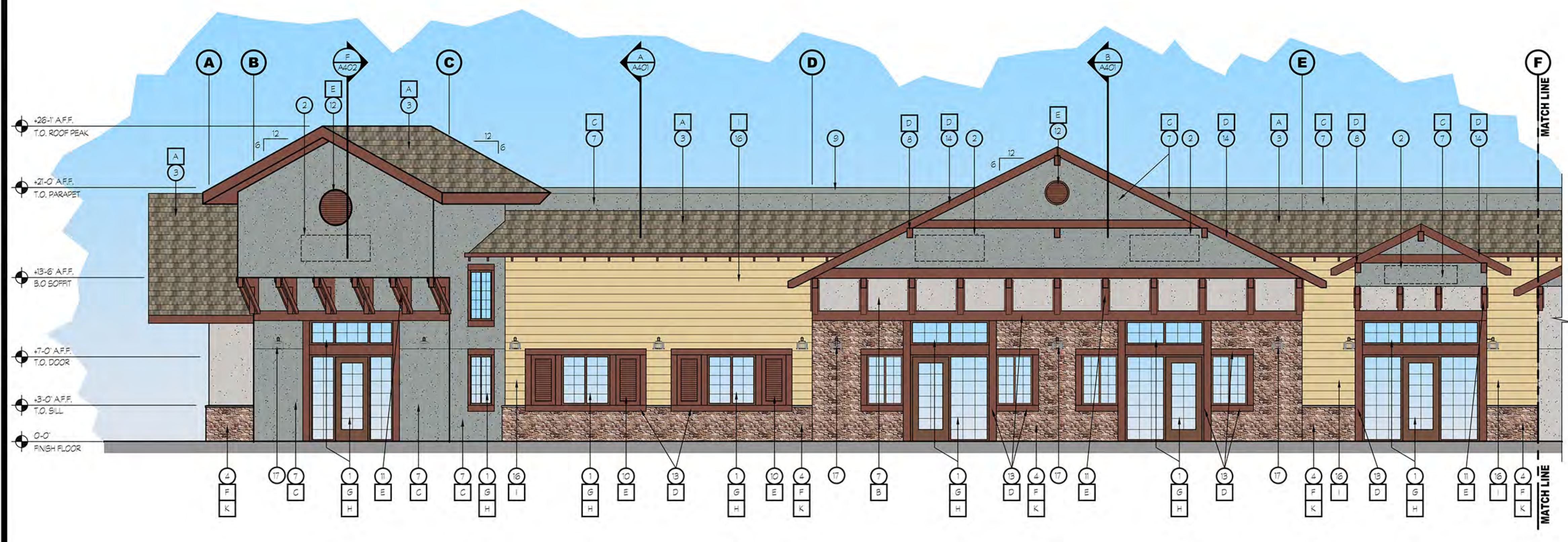
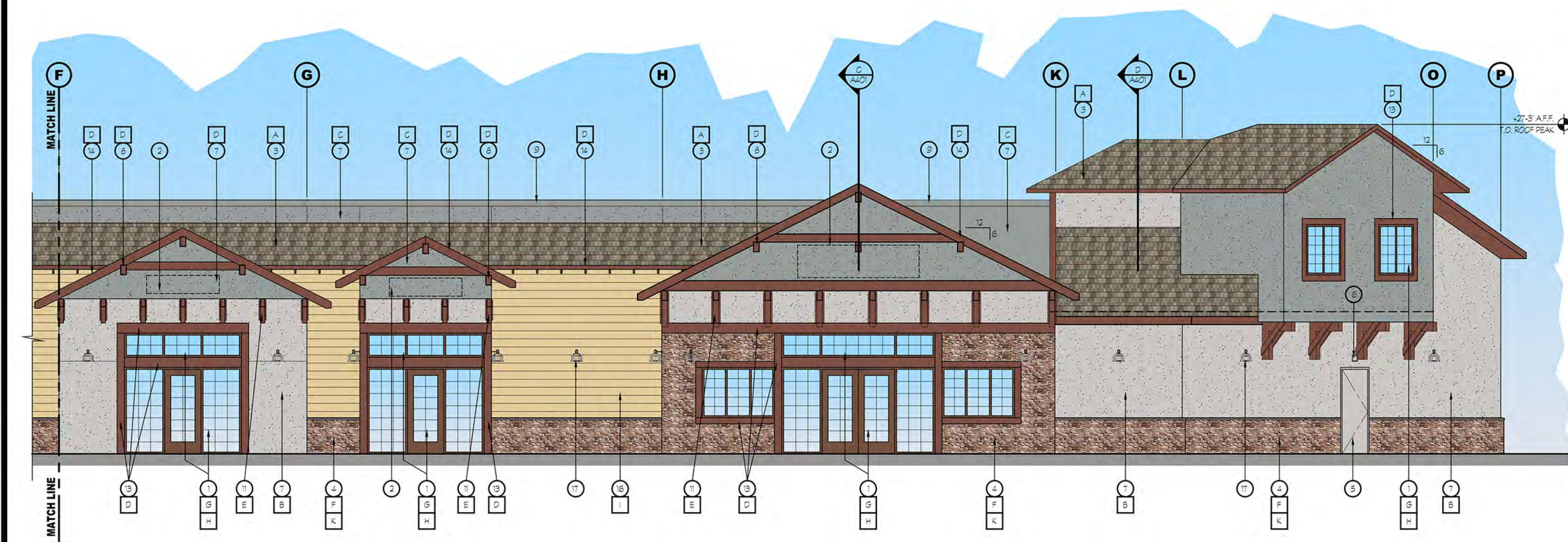
A301

KEY NOTES

- 1 STOREFRONT WINDOW SYSTEM; 2x4.5' CENTER GLAZING SYSTEM; WITH 1' CLEAR DUAL GLAZING
- 2 FUTURE SIGN LOCATION
- 3 CONCRETE TILE ROOFING
- 4 STUCCO STONE WITH WATERBASE OVER EXTERIOR CEMENT PLASTER OVER METAL LATH OVER DUPONT TYVEK DRAINWRAP
- 5 HOLLOW METAL DOOR AND FRAME PAINTED TO MATCH SURROUNDING BUILDING MATERIAL
- 6 LED WALL PACK MOUNTED LIGHT FIXTURE, SEE ELECTRICAL DWGS.
- 7 7/8" THREE COAT STUCCO SYSTEM OVER DUPONT TYVEK DRAINWRAP
- 8 WOOD OUTRIGGER, PAINTED
- 9 METAL FLASHING, PAINTED TO MATCH SURROUNDING BUILDING FINISH
- 10 PANEL WOOD SHUTTER, PAINTED
- 11 CORBELS, PAINTED
- 12 VENTS, PAINTED
- 13 HARDTRIM BOARD, PAINTED
- 14 FASCIA BOARD, PAINTED
- 15 12" TALL CAN TYPE ADDRESS NUMBERS, BACKLIT, FACE COLOR BLACK; RETURN COLOR MATCH FASCIA TRIM, MOUNTED FACING ROADWAY
- 16 LAP SIDING
- 17 LED WALL SCONCE MOUNTED LIGHT FIXTURE, SEE ELECTRICAL DWGS.

COLOR LEGEND

- A EAGLE ROOFING; PROFILE: GOLDEN EAGLE, COLOR: 1834 KINGS CANYON BLEND
- B DUNN EDWARDS; DEC780 'ICE GRAY'
- C DUNN EDWARDS; DEC789 'LIGHT GRAY'
- D DUNN EDWARDS; DEC780 'BISON BEIGE'
- E DUNN EDWARDS; DET489 'RED ROOSTER'
- F CORONADO STONE: 75% FRENCH COUNTRY VILLA, COLOR: 'VERSAILLES'
25% TUSCAN VILLA, COLOR: 'VERONA'
- G ALUMINUM STOREFRONT SYSTEM; OLD CASTLE 'SAGE BROWN'
- H GLAZING; CLEAR
- I DUNN EDWARDS; DET489 'PRAIRIE LAND'
- J DUNN EDWARDS; DET688 'WILD HORSES'
- K CORONADO STONE; CHISELED STONE SILL - 'BROWNSTONE'



20 ENLARGED WEST ELEVATION

SCALE: 3/16" = 1'-0"



K12 Architects

K12 Architects, Inc
3090 Fite Circle, #104
Sacramento, CA 95827

PH:(916) 455-6500 FAX:(916) 455-8100

CONSULTANTS:

CONTRACTOR:

PROJECT:

**FIDDYMENT
PLAZA**

**NEW CONVENIENCE STORE
WITH FUELING,
SHELL RETAIL TENANT SPACE**

**4701 Fiddyment Road
Roseville, California 95747**

DEVELOPER:

**DHILLON AND SONS
ENTERPRISES**

**201 Bellingham ct
Lincoln, CA 95648**

REVISIONS:

PROFESSIONAL SEALS:



PROJECT NUMBER: **16-021** PROJECT DATE: **8-10-2018**

SHEET CONTENTS:

**EXTERIOR
ENLARGED EAST
ELEVATION**

SHEET NUMBER:

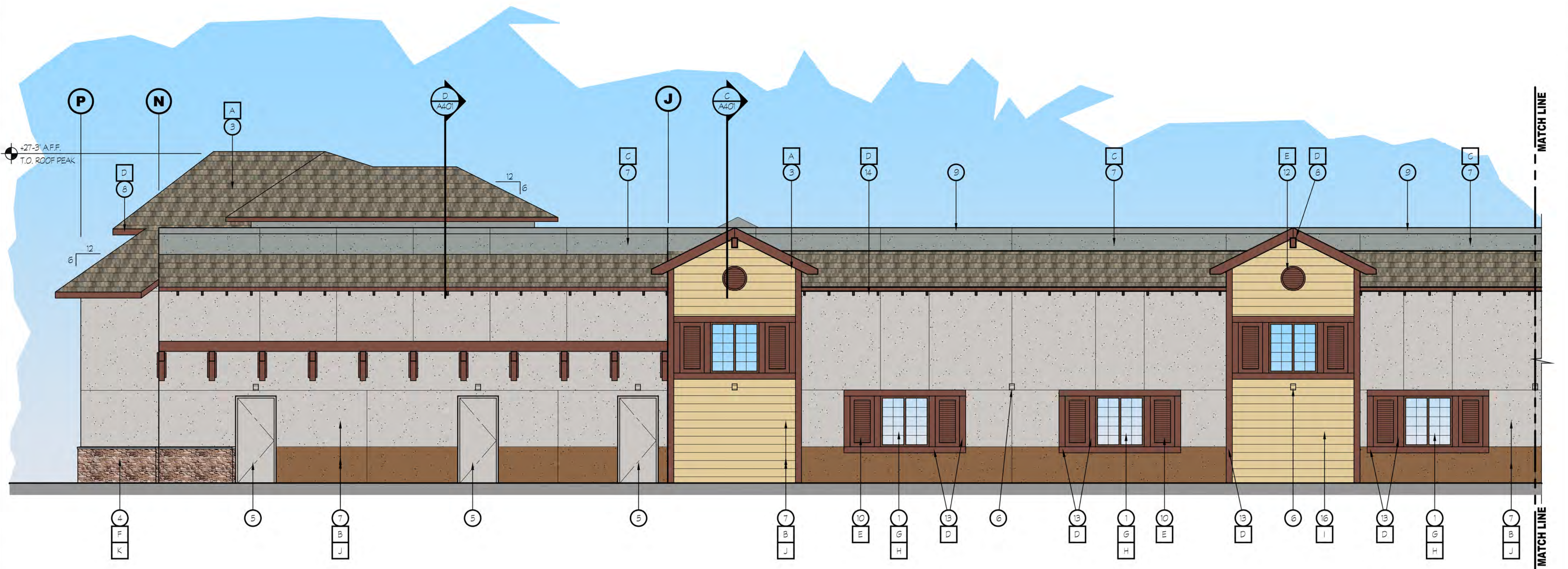
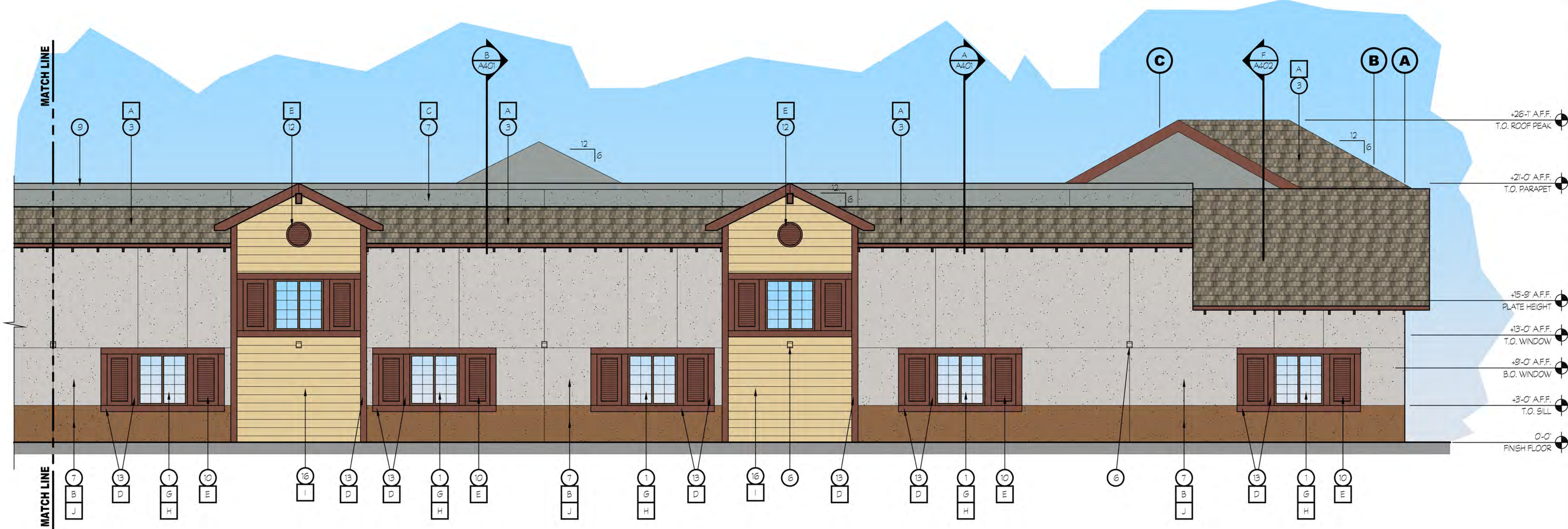
A302

KEY NOTES

- 1 STOREFRONT WINDOW SYSTEM; 2x4.5' CENTER GLAZING SYSTEM; WITH 1" CLEAR DUAL GLAZING
- 2 FUTURE SIGN LOCATION
- 3 CONCRETE TILE ROOFING
- 4 STUCCO STONE WITH WATERTABLE OVER EXTERIOR CEMENT PLASTER OVER METAL LATH OVER DUPONT TYVEK DRAINWRAP
- 5 HOLLOW METAL DOOR AND FRAME PAINTED TO MATCH SURROUNDING BUILDING MATERIAL
- 6 LED WALL PACK MOUNTED LIGHT FIXTURE, SEE ELECTRICAL DWGS.
- 7 7/8" THREE COAT STUCCO SYSTEM OVER DUPONT TYVEK DRAINWRAP
- 8 WOOD OUTRIGGER, PAINTED
- 9 METAL FLASHING; PAINTED TO MATCH SURROUNDING BUILDING FINISH
- 10 PANEL WOOD SHUTTER, PAINTED
- 11 CORBELS; PAINTED
- 12 VENTS; PAINTED
- 13 HARDTRIM BOARD; PAINTED
- 14 FASCIA BOARD; PAINTED
- 15 12" TALL CAN TYPE ADDRESS NUMBERS; BACKLT; FACE COLOR: BLACK; RETURN COLOR: MATCH FASCIA TRIM; MOUNTED FACING ROADWAY
- 16 LAP SIDING
- 17 LED WALL SCONCE MOUNTED LIGHT FIXTURE, SEE ELECTRICAL DWGS.

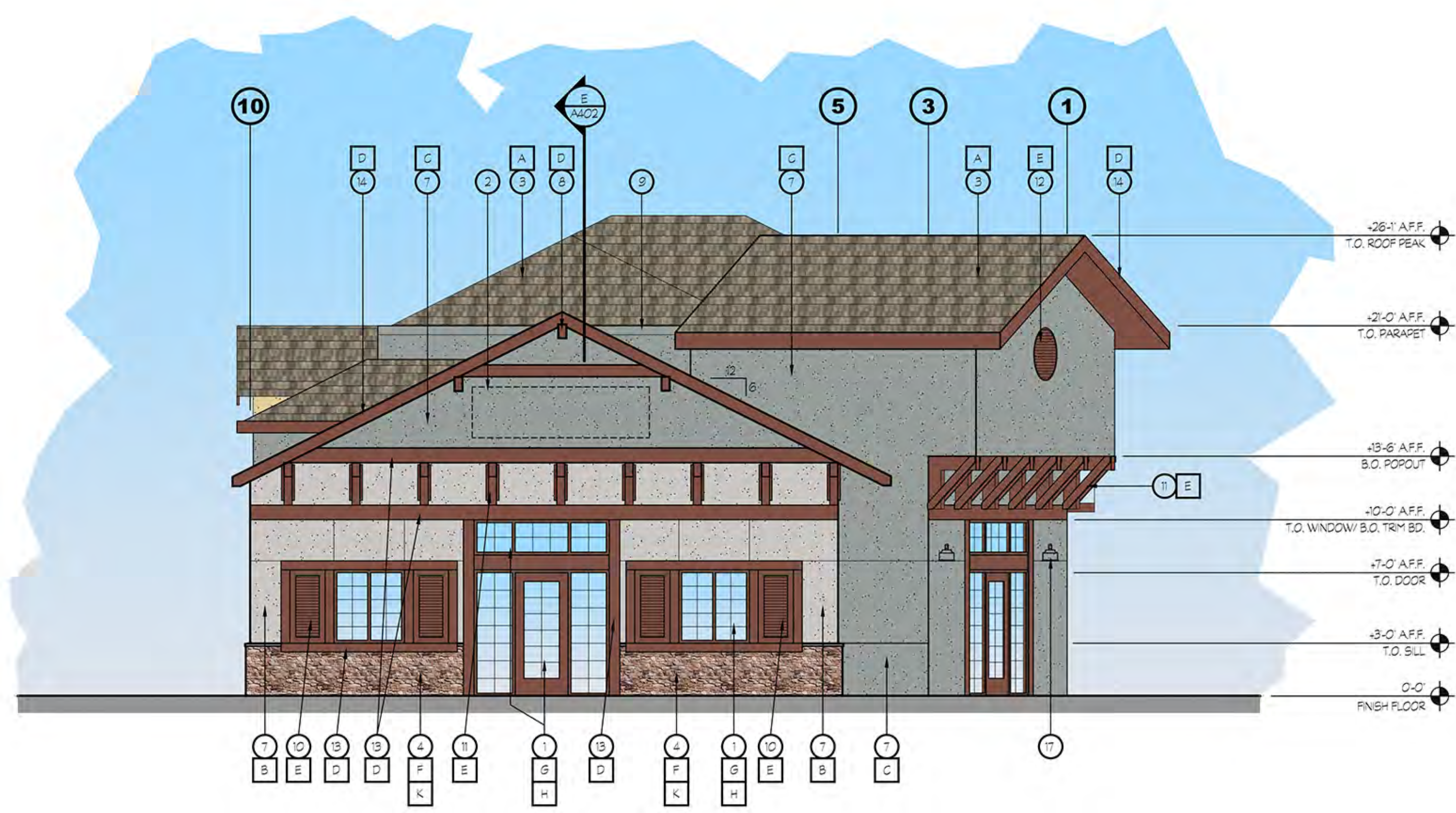
COLOR LEGEND

- A EAGLE ROOFING; PROFILE: GOLDEN EAGLE; COLOR: 1634 KINGS CANYON BLEND
- B DUNN EDWARDS; DET790 'ICE GRAY'
- C DUNN EDWARDS; DET789 'LIGHT GRAY'
- D DUNN EDWARDS; DET750 'BISON BEIGE'
- E DUNN EDWARDS; DET489 'RED ROOSTER'
- F CORONADO STONE; 75% FRENCH COUNTRY VILLA, COLOR: 'VERSAILLES'; 25% TUSCAN VILLA, COLOR: 'VERONA'
- G ALUMINUM STOREFRONT SYSTEM; OLD CASTLE 'SAGE BROWN'
- H GLAZING: CLEAR
- I DUNN EDWARDS; DET489 'PRAIRIE LAND'
- J DUNN EDWARDS; DET663 'WILD HORSES'
- K CORONADO STONE; CHISELED STONE SILL - 'BROWNSTONE'



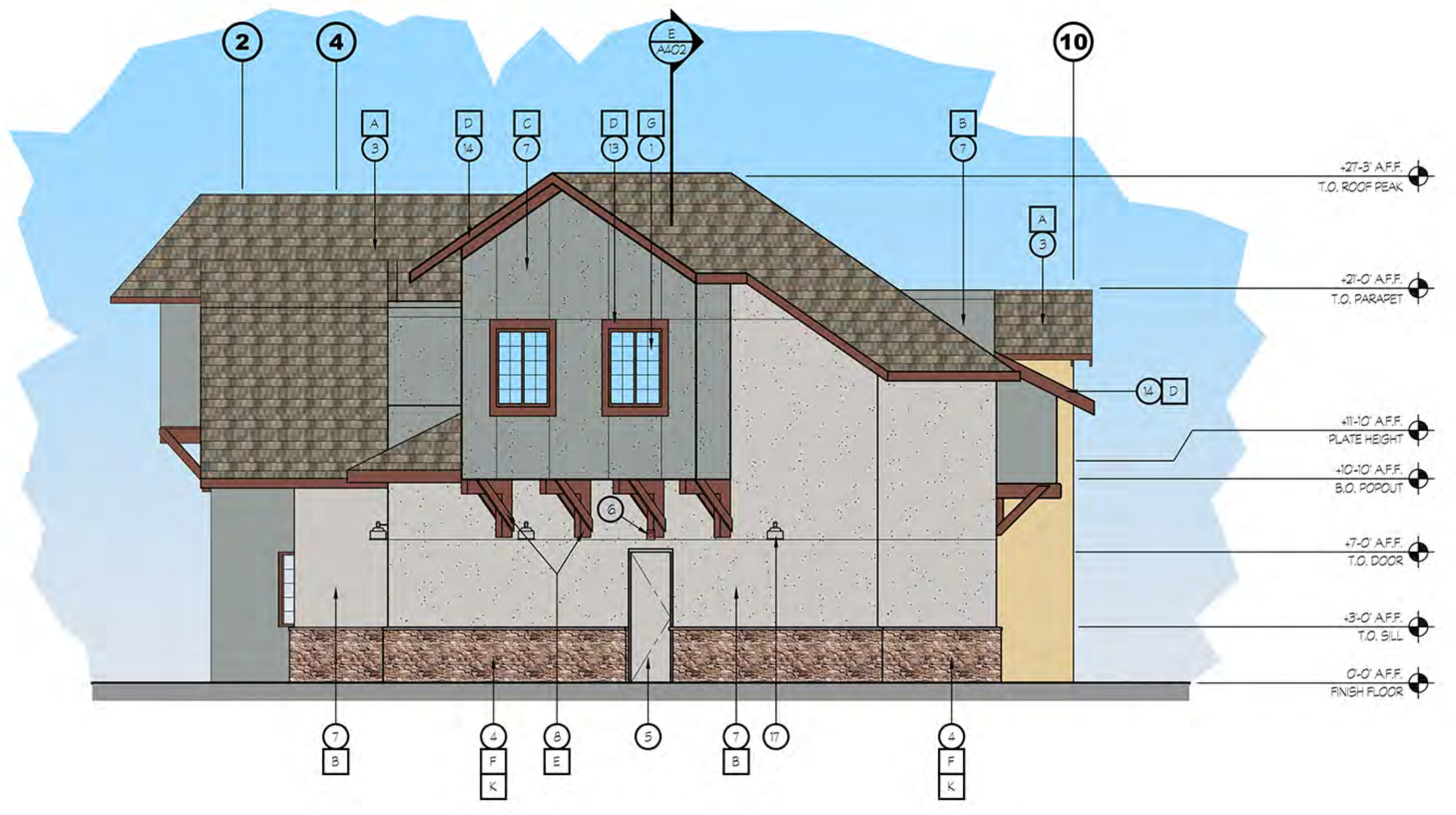
20 ENLARGED EAST ELEVATION

SCALE: 3/16" = 1'-0"



14 SOUTH ELEVATION

SCALE: 3/16" = 1'-0"



16 NORTH ELEVATION

SCALE: 3/16" = 1'-0"

KEY NOTES

- 1 STOREFRONT WINDOW SYSTEM, 2x4-5' CENTER GLAZING SYSTEM, WITH 1 CLEAR DUAL GLAZING
- 2 FUTURE SIGN LOCATION
- 3 CONCRETE TILE ROOFING
- 4 STUCCO STONE WITH WATERTABLE OVER EXTERIOR CEMENT PLASTER OVER METAL LATH OVER DUPONT TYVEK DRAINWRAP
- 5 HOLLOW METAL DOOR AND FRAME PAINTED TO MATCH SURROUNDING BUILDING MATERIAL
- 6 LED WALL PACK MOUNTED LIGHT FIXTURE, SEE ELECTRICAL DWGS.
- 7 7/8" THREE COAT STUCCO SYSTEM OVER DUPONT TYVEK DRAINWRAP
- 8 WOOD OUTRIGGER, PAINTED
- 9 METAL FLASHING, PAINTED TO MATCH SURROUNDING BUILDING FINISH
- 10 PANEL WOOD SHUTTER, PAINTED
- 11 CORBELS, PAINTED
- 12 VENTS, PAINTED
- 13 HARDTRIM BOARD, PAINTED
- 14 FASCIA BOARD, PAINTED
- 15 12" TALL CAN TYPE ADDRESS NUMBERS, BACKLIT, FACE COLOR: BLACK; RETURN COLOR: MATCH FASCIA TRIM, MOUNTED FACING ROADWAY
- 16 LAP SIDING
- 17 LED WALL SCONCE MOUNTED LIGHT FIXTURE, SEE ELECTRICAL DWGS.

COLOR LEGEND

- | | |
|---|--|
| A | EAGLE ROOFING, PROFILE: GOLDEN EAGLE, COLOR: 1834 KINGS CANYON BLEND |
| B | DUNN EDWARDS, DEC790 'ICE GRAY' |
| C | DUNN EDWARDS, DEC789 'LIGHT GRAY' |
| D | DUNN EDWARDS, DEC750 'BISON BEIGE' |
| E | DUNN EDWARDS, DET489 'RED ROOSTER' |
| F | CORONADO STONE: 75% FRENCH COUNTRY VILLA, COLOR: 'VERSAILLES'
25% TUSCAN VILLA, COLOR: 'VERONA' |
| G | ALUMINUM STOREFRONT SYSTEM, OLD CASTLE 'SAGE BROWN' |
| H | GLAZING: CLEAR |
| I | DUNN EDWARDS, DET489 'PRAIRIE LAND' |
| J | DUNN EDWARDS, DET683 'WILD HORSES' |
| K | CORONADO STONE: CHISELED STONE SILL - 'BROWNSTONE' |



K12 Architects, Inc
3090 Fite Circle, #104
Sacramento, CA 95827
PH:(916) 455-6500 FAX:(916) 455-8100

CONSULTANTS:

CONTRACTOR:

PROJECT:
FIDDYMENT PLAZA

NEW CONVENIENCE STORE WITH FUELING, SHELL RETAIL TENANT SPACE

**4701 Fiddyment Road
Roseville, California 95747**

DEVELOPER:
DHILLON AND SONS ENTERPRISES
201 Bellingham ct
Lincoln, CA 95648

REVISIONS:



PROJECT NUMBER: 16-021 | PROJECT DATE: 8-10-2018

SHEET CONTENTS:

EXTERIOR NORTH AND SOUTH ELEVATIONS

SHEET NUMBER:

A303